

**Edna Road
Raynes Park, SW20 8BS**

£800,000 Freehold



This lovely 1,156 sqft THREE DOUBLE BEDROOM, TWO BATHROOM Edwardian Apostle House has landscaped 43'ft West facing rear garden with summer house and is offered to the market with no onward chain. Located on a desirable tree lined cul de sac, 0.4 Miles to Raynes Park High Street and Station and 0.5 miles to Wimbledon Chase Station. There is also a spacious front reception room, modern open plan kitchen/dining room, extended conservatory, family bathroom and principle bedroom with en-suite shower room.



Although these particulars are believed to be correct, their accuracy is not guaranteed and they do not form part of any contract.

Celebrating 30 years of successful Sales and Lettings in Merton



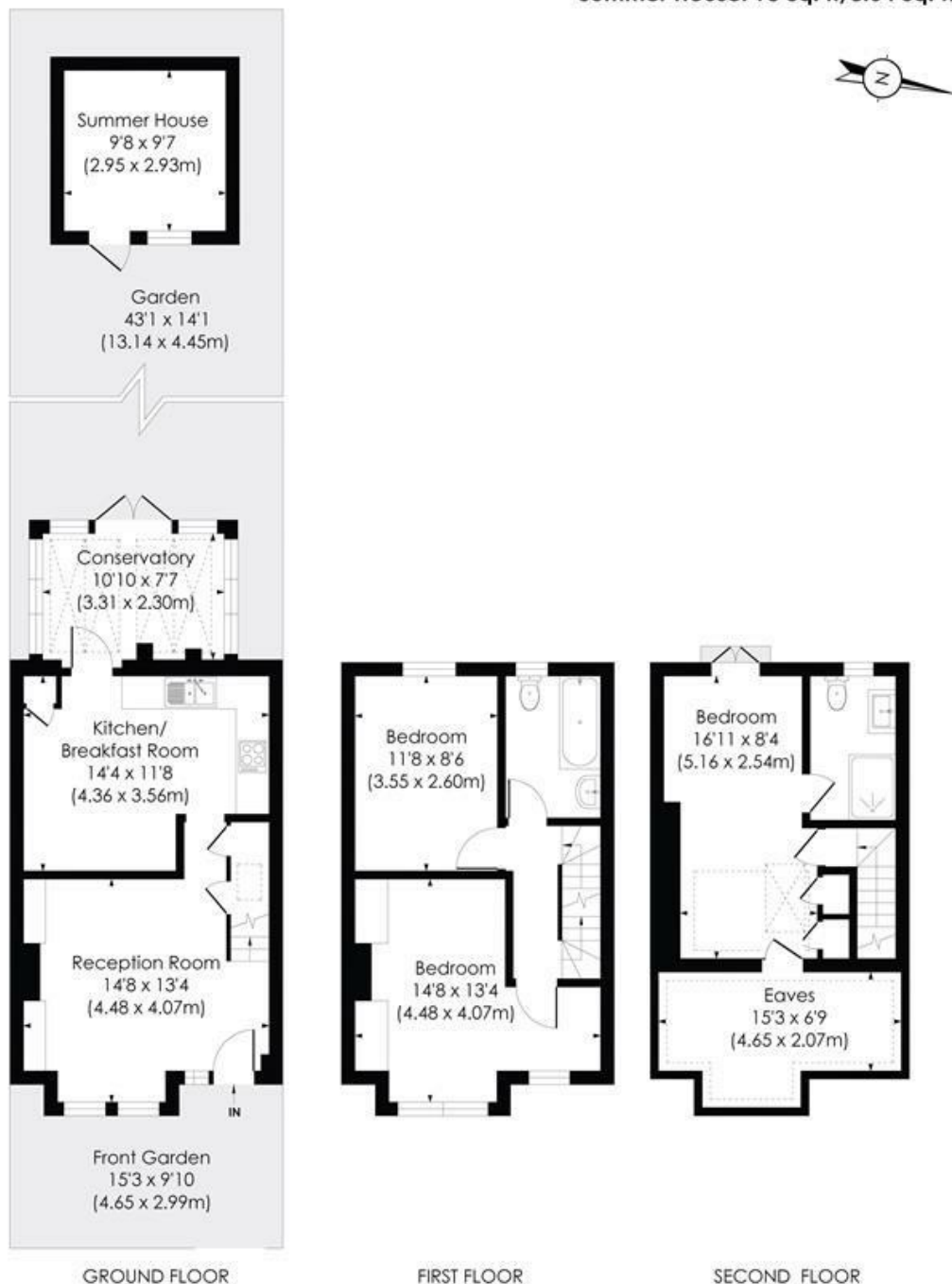
EDNA ROAD, SW20

Approx. Gross Internal Floor Area

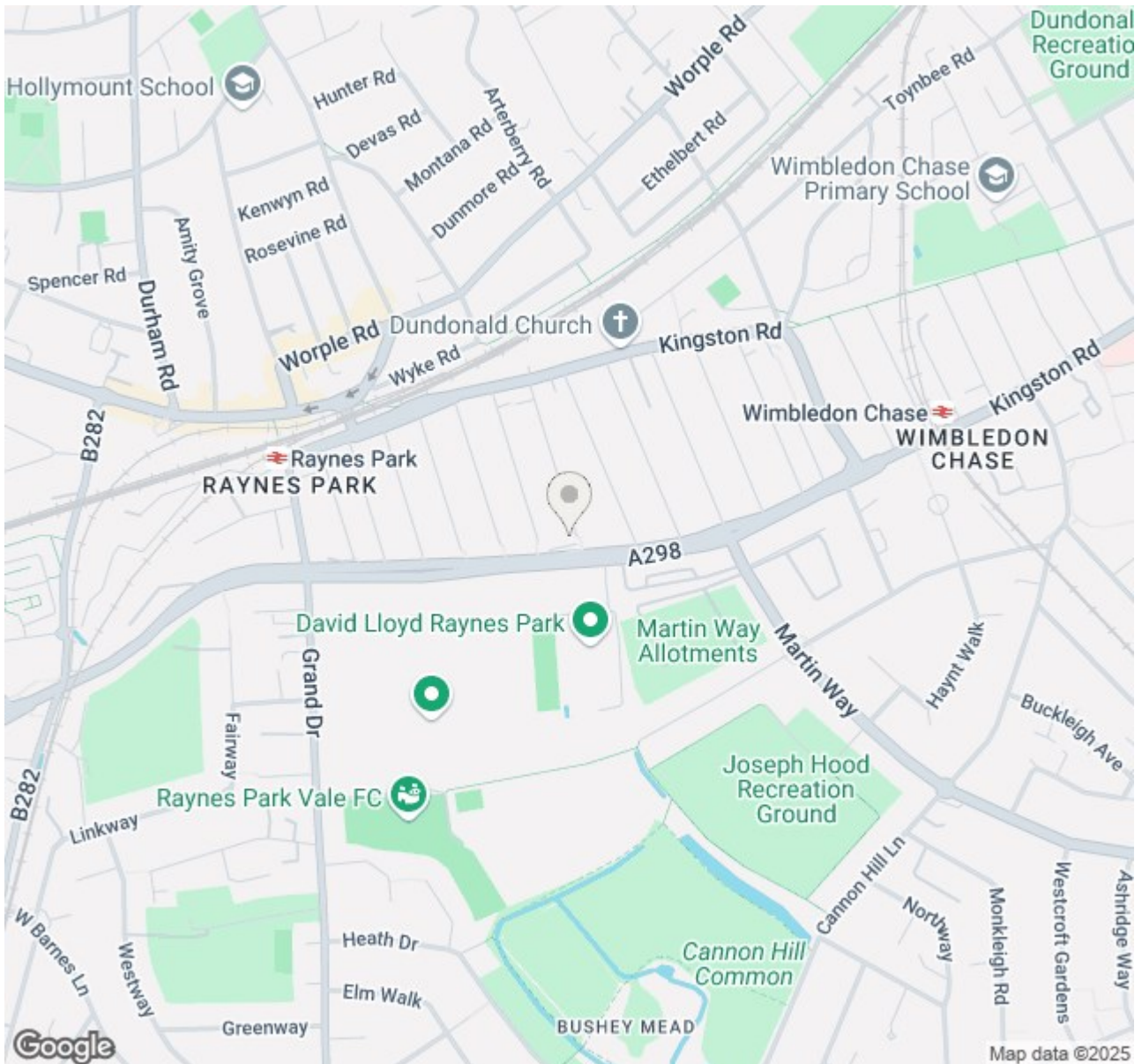
1156 Sq. ft/107.37 Sq. m (Including Eaves)

1041 Sq. ft/96.69 Sq. m (Excluding Eaves)

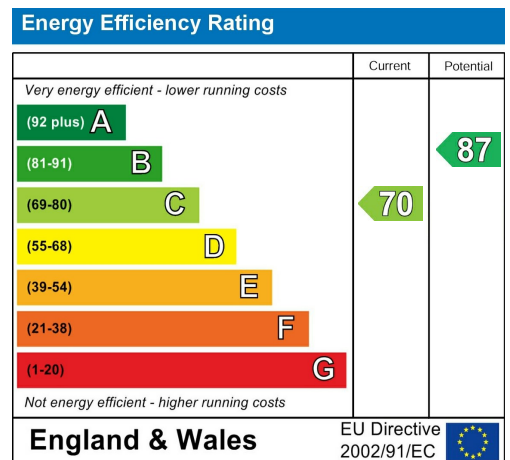
Summer House: 93 Sq. ft/8.64 Sq. m



© Pixangle Property Marketing Ltd. info@pixangle.com Tel: 0208 870 2118



- Three Double Bedroom - Two Bathroom - 1,156sqft
- Edwardian Mid Terrace "Apostle" House
- 43'ft West Facing Rear Garden with Summer House
- Extended Principle Bedroom with En-Suite Shower Room
- Conservatory Rear Extension
- Modern Open Plan Kitchen/Dining Room
- 0.4 Miles to Raynes Park High Street and Station
- 0.5 Miles to Wimbledon Chase Station
- No Onward Chain
- EPC Rating C - Council Tax Band - E



For Free Mortgage Quote and Best Mortgage Rates, call Ellisons Mortgage Advisor on 0208 944 9595



Although these particulars are believed to be correct, their accuracy is not guaranteed and they do not form part of any contract.

Celebrating 30 years of successful Sales and Lettings in Merton

